



Snitcher Asset Management	Date	2009-06-17	Ref	ks011p03b05v05_local_ins	Page	1(5)
	Issued by	Magnus Hagberg				
	Title	Local installation SAM				

Local installation Snitcher Asset Management

Abstract:

This document describes how to make a local installation of SAM



Snitcher Asset Management	Date	2009-06-17	Ref	ks011p03b05v05_local_ins	Page	2(5)
	Issued by Magnus Hagberg					
	Title Local installation SAM					

Table of contents

1	GENERAL	3
2	INSTALLATION	3
2.1	Fetch the ZIP-files	3
2.2	Client Code	4
2.3	Labels	5
3	UPGRADE	5

Snitcher Asset Management	Date	Ref	Page
	2009-06-17	ks011p03b05v05_local_ins	3(5)
		Issued by	
		Magnus Hagberg	
		Title	
		Local installation SAM	

1 GENERAL

A local installation of SAM must normally be used if there is a firewall between the application server and the client. This is the case for installations outside the Ericsson intranet.

If there is a firewall the templates for labels must also be copied to the local network.

Please read the SAM installation manual first and perform the installation steps in that manual.

The files are stored in ZIP-files on the application servers.

Use the nearest application server:

- Älvsjö Sweden (esealvm092)
- Atlanta USA (eusaamw0314)
- Kuala Lumpur (emykInt215)

If you have problem to fetch these files please contact SAM support (support.sam@prevas.se).

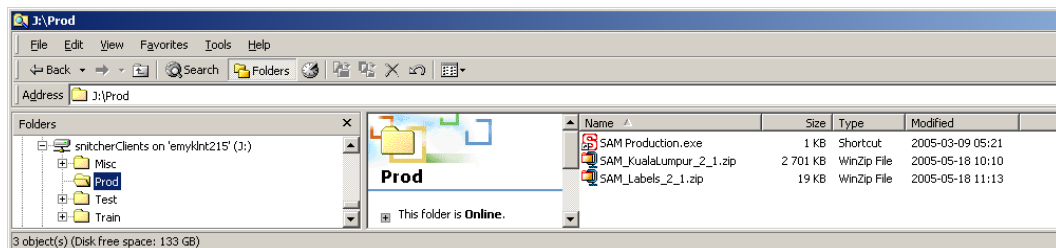
2 INSTALLATION

2.1 Fetch the ZIP-files

Use Explore (Tools → Map Network Drive...) to connect to a share on the application server.

The share is \\<Server Name>\SnitcherClient

Replace <Server Name> with the actual name of the server (e.g. emykInt215 for Kuala Lumpur).



You find the ZIP-files in the subdirectory Prod with a name like SAM_KualaLumpur_X_X.ZIP and SAM_Labels_X_X.ZIP.

On the Atlanta server the file is called SAM_Atlanta_X_X.ZIP and SAM_Alvsjo_X_X.ZIP on the Älvsjö server.

“X_X” is the version number, e.g. “2_3”, “2_5”.

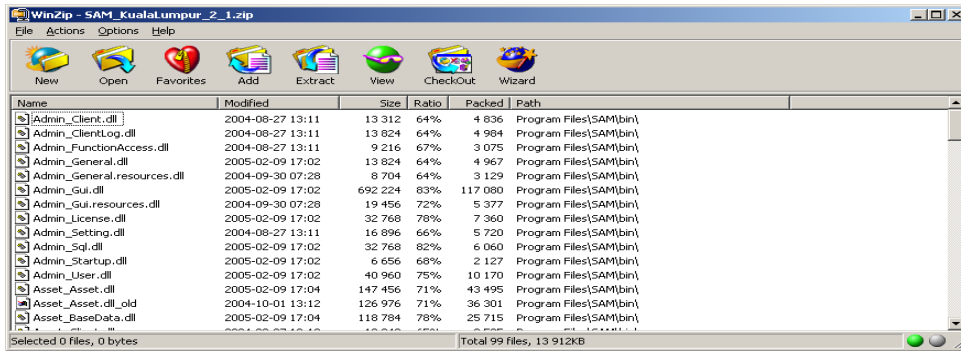
Copy one or both of these files to your local computer.

You don't need to copy the label-file if you are on the Ericsson Intranet.

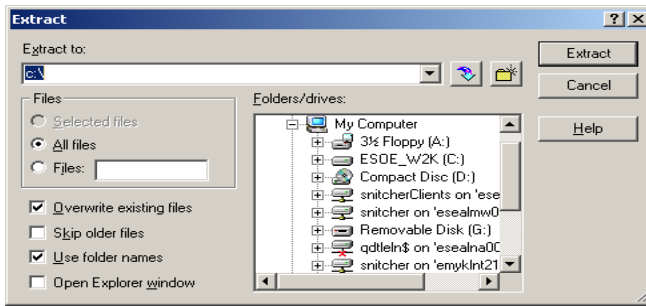
Snitcher Asset Management	Date	2009-06-17	Ref	ks011p03b05v05_local_ins	Page	4(5)
	Issued by Magnus Hagberg					
Title		Local installation SAM				

2.2 Client Code

Open the SAM_<Server>_X_X.ZIP file.



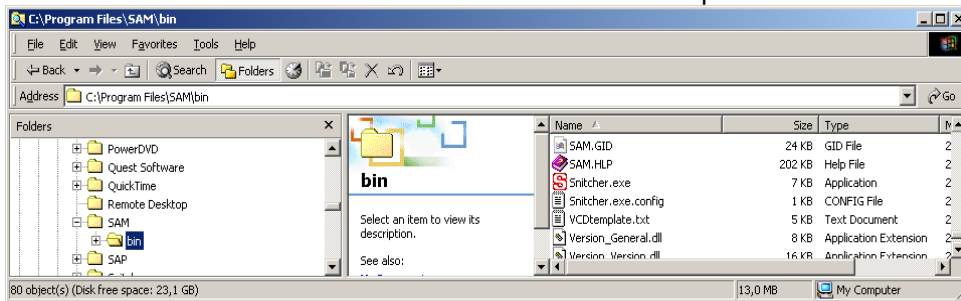
Select "Extract".



If you want to, these files can be placed anywhere on your PC, but we recommend the structure C:\Program Files\SAM.

Be sure that you have C:\ in the field "Extract to:" to get the default location and then click on [Extract].

Use the explorer to locate a file called C:\Program Files\SAM\bin\Snitcher.exe and create a shortcut to this file and move the shortcut to the Desktop.



Double-click on the shortcut and SAM should start up.

Snitcher Asset Management	Date	2009-06-17	Ref	ks011p03b05v05_local_ins	Page	5(5)
	Issued by	Magnus Hagberg				
	Title	Local installation SAM				

2.3 Labels

If you want a local copy of the label files you follow the procedure in section 2.2. Start SAM and use the “Tools → Settings -> File Locations” menu option to set the “Label Templates” path. Set it to the directory where the zip-files were extracted.

3 UPGRADE

In version SAM 2.2 and later you get a message if you don't have the same version locally on your PC as the version on the application server.

If you get this message you must upgrade your software and the installation procedure is the same as when you made the first installation, the only difference is that you don't need to create a new shortcut if you use the same install directory.

The old files are replaced by the ZIP contents so you only get the new version on your PC.