

Mikon Client 4.0 - Release Notes	Date Sep 12, 2014	Ref	Page 1(9)
---	----------------------	-----	--------------

Mikon Client 4.0 - Release Notes

Mikon Client 4.0 is a major new release with a modern ribbon style menu replacing the old menu and toolbar. It will make it easier to see and find the available functions.

Other new functionality is a new instrument implementation which can be used without XML configuration. A major enhancement is also logging of all database configuration changes and client configuration.

All new functions are described in chapter 1, while fixed defects are listed in chapter 2.

Please note that Client 4.0 requires Microsoft .NET Framework 4.0.

Contents

1. New functions	2
1.1 Ribbon Menu	2
1.2 Instruments	3
1.3 Sparklines	5
1.4 Query Filtering	6
1.5 Query Change Log	7
1.6 Client Change Log	7
1.7 Signal Group Editor	8
2. Fixed issues	9

1. New functions

1.1 Ribbon Menu

Client 4.0 introduces a ribbon style menu replacing the old windows menu and toolbar. The ribbon have tabs for main grouping of functions, e.g. presentation functions. Within each tab related functions are also group together. Below are the presentation, workspace and ad-hoc tabs shown.

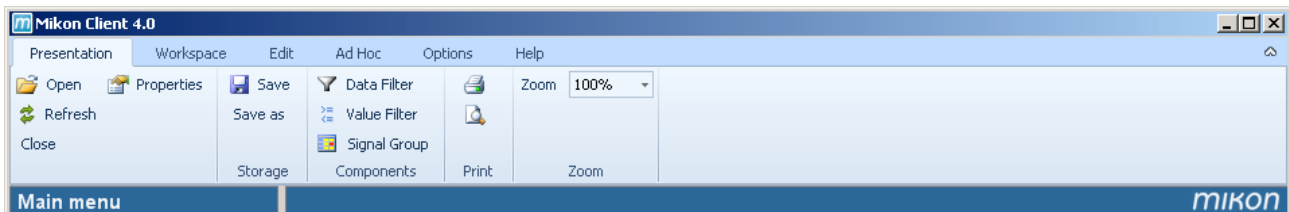


Fig. 1 Presentation tab

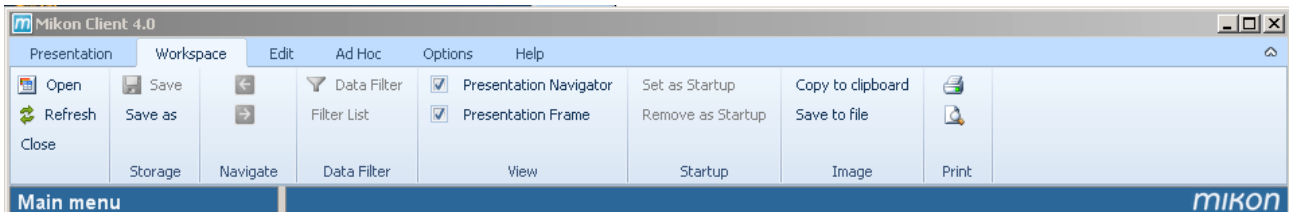


Fig. 2 Workspace tab

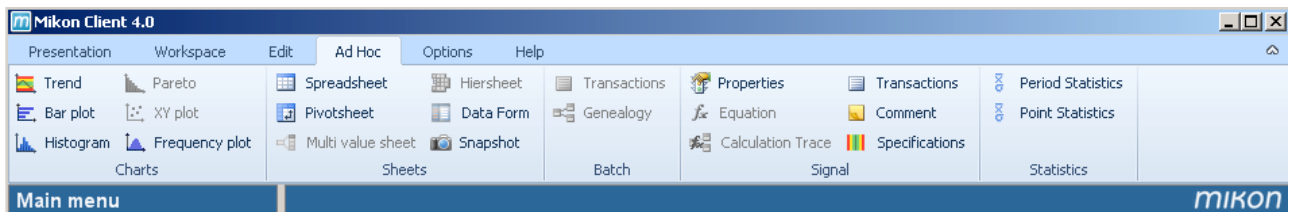


Fig. 3 Ad Hoc tab

The ribbon is initialize visible, but can be minimized using the button in the upper right corner. Only the tabs are then visible and the ribbon will only be displayed when clicking a tab.

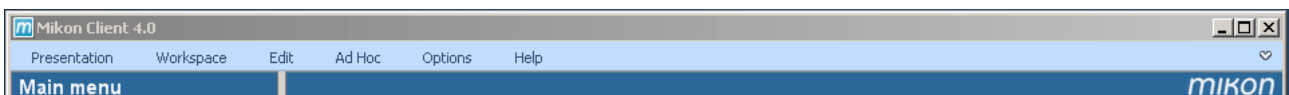


Fig. 4 Minimized ribbon

1.2 Instruments

An instrument is a workspace element that displays a single signal value. In previous releases instruments were available with XML configuration, but now it can be done using the client configuration tools.

The creation of instruments is available from the signal tree menu. Currently the available instruments are radial gauge and value box.

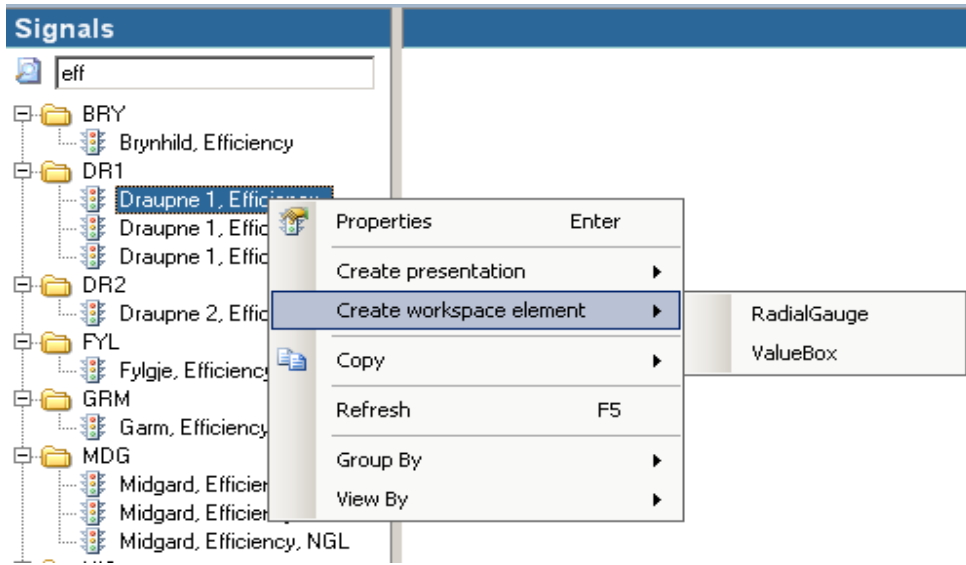


Fig. 5 Create workspace element menu

The instrument is initially displayed with a frame making it possible to move and resize it. The frame can be removed using the workspace tab.

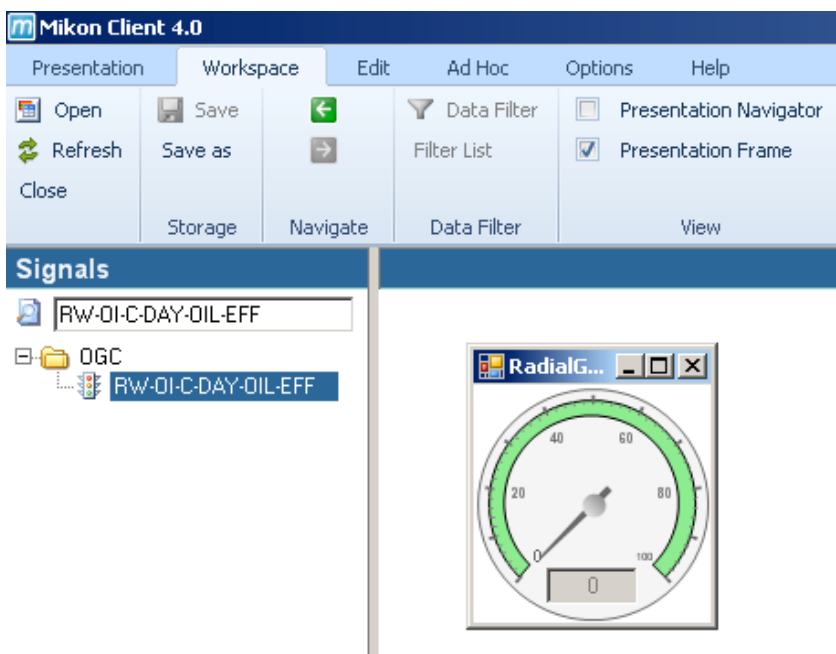


Fig. 6 Radial Gauge with frame

The settings for the instruments can be edited using the context menu. All instruments have data filter settings specifying the information level and time for the signal value. Note that a common workspace data filter also can be used. The radial gauge will also have settings for scaling.

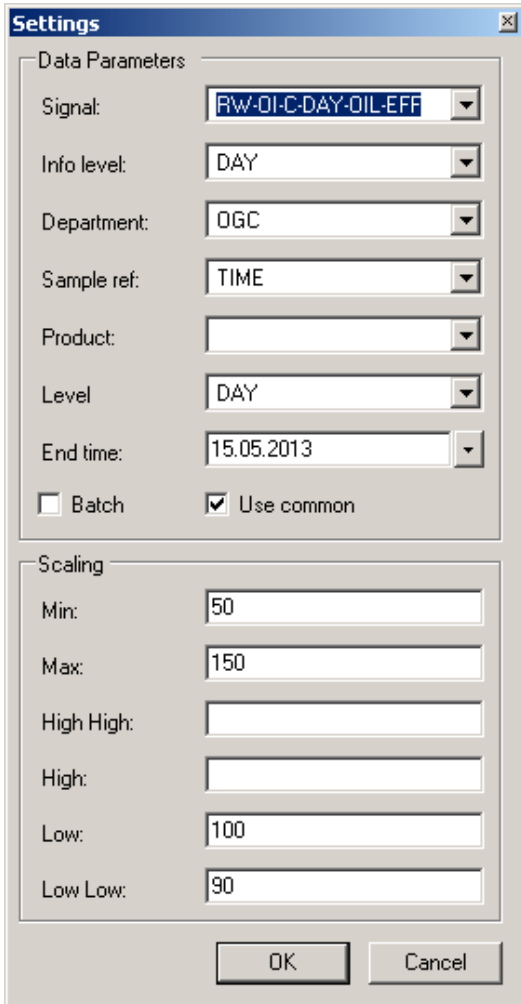


Fig. 6 Radial Gauge Settings

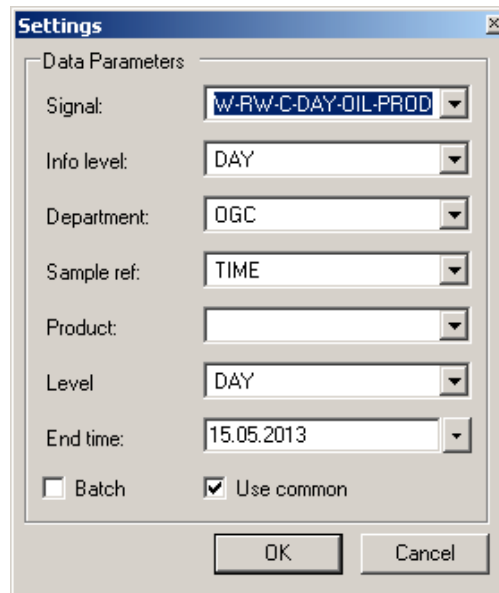


Fig. 7 Value box settings



Daily Oil Production

2 274.0

Budget

2 716.0



Daily Efficiency

Fig. 8 Workspace example

1.3 Sparklines

Client 4.0 also introduces sparklines in spreadsheets. A sparkline is a very small line chart drawn without axes and showing the variation in some measurement. It is displayed in an extra column at right in normal view or in an extra row on top if turned.

The minimum and maximum values are indicated with red. Negative values are also red.

Viewing sparklines is an option which can be turned on using the layout view menu.

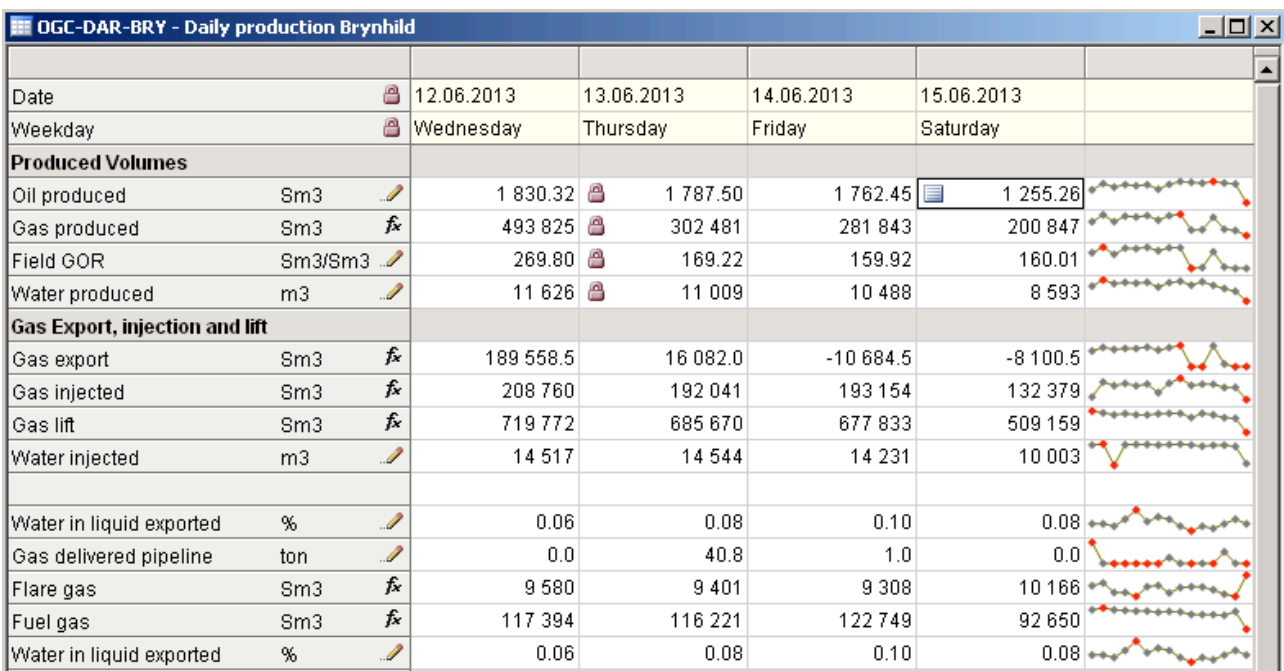


Fig. 9 Spreadsheet with sparklines

1.4 Query Filtering

The Query presentation has been enhanced to use individual controls for filtering instead of a listbox row on top of the tables. In addition the filtering is done immediate with matching on attributes starting with the characters entered.

The screenshot shows a window titled "Signal Configuration" with a toolbar at the top containing navigation icons and a status bar showing "1 of 1453". Below the toolbar is a "Select" dropdown menu. The main area contains a table with the following data:

Signal Id	Name	Department	Reference	Sig Unit	Level	Round
1	JV.TEST44_2	MDG	TIME	Tonn/d	DAY	
2	KR-OI-C-DZY-OIL-BUD	OGC	TIME	Sm3	DAY	
3	KR-OI-C-DZY-OIL-PRG	OGC	TIME	Sm3	DAY	
4	KR-OI-C-DAY-OIL-BUD	OGC	TIME	Sm3	DAY	
5	KR-OI-C-DAY-OIL-PRG	OGC	TIME	Sm3	DAY	
6	RW-CO-EXPLORE1	OGC	TIME		WEEK	
7	RW-CO-EXPLORE2	OGC	TIME		DAY	
8	RW-CO-SB-OPER	OGC	TIME		WEEK	
9	RW-CO-SH-OPER	OGC	TIME		WEEK	
10	RW-CO-SN-OPER	OGC	TIME		WEEK	

Fig. 10 Signal Configuraion Query with filter controls

The screenshot shows the same "Signal Configuration" window, but with the "Select" dropdown menu containing the text "SH". The table below is filtered to show only records starting with "SH":

Signal Id	Name	Department	Reference	Sig Unit	Level	Round
658	SH-CO-C-DZY-CON-BUD	NIS	TIME	Sm3	DAY	
659	SH-CO-C-DZY-CON-EFF	NIS	TIME	%	DAY	
660	SH-CO-C-DZY-CON-FC4	NIS	TIME	Sm3	DAY	
661	SH-CO-C-DZY-CON-PRG	DR2	TIME	Sm3	DAY	
662	SH-CO-C-DZY-CON-PROD	NIS	TIME	Sm3	DAY	
663	SH-CO-C-DAY-CON-PRG	DR2	TIME	Sm3	DAY	
664	SH-CO-C-DAY-CON-PROD	NIS	TIME	Sm3	DAY	
665	SH-CO-C-WEK-CON-DIF	NIS	TIME	%	WEEK	
666	SH-CO-C-WEK-CON-YDIF	NIS	TIME	%	WEEK	
667	SH-CO-I-DAY-CON-BUD	NIS	TIME	Sm3/D	DAY	

Fig. 11 Signal Configuraion Query with immediate filtering

1.7 Signal Group Editor

Editing of signal group for most presentation types is now available. The editor does not support drag and drop of signals, but copy & paste of signal id is possible. Note that signal id can be copied from the signal tree menu group.

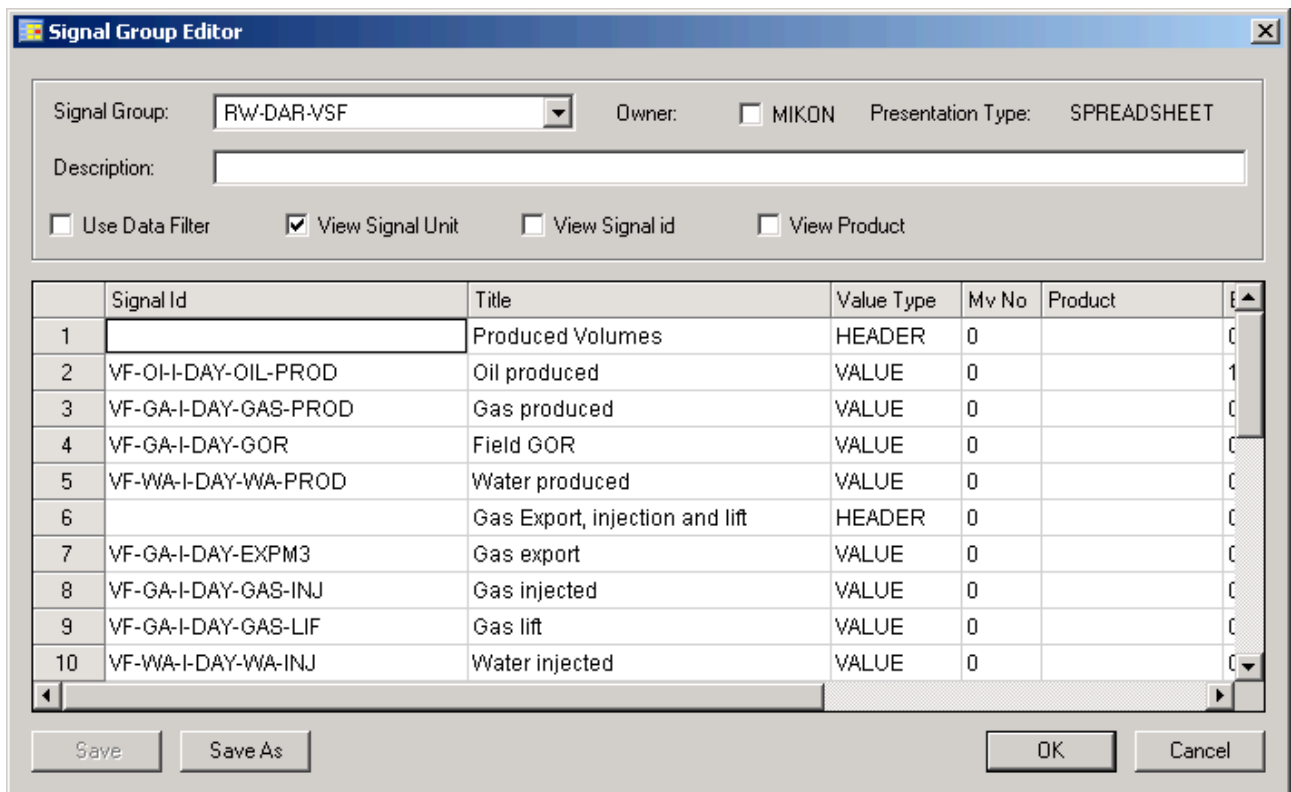


Fig. 14 Signal Group Editor

